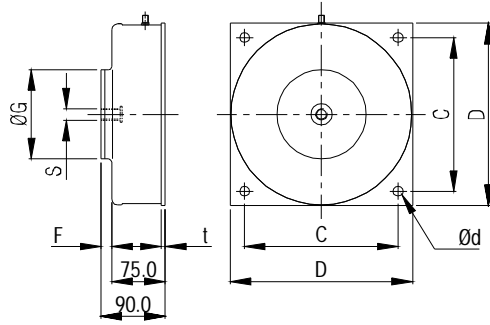
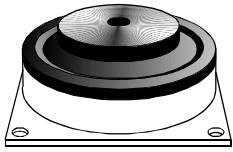


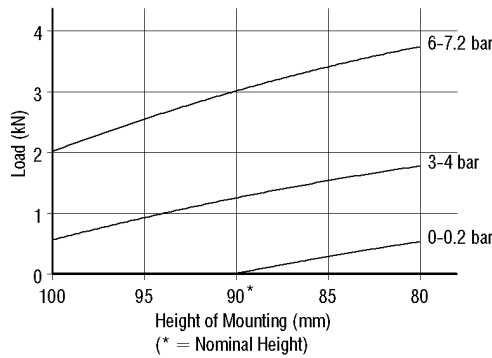
**Air Mountings**



Note: The maximum pressure to which Air Mountings should normally be inflated is 6 bar.

Part Number	D (mm)	C (mm)	Screw Thread Size S (mm)	Ød (mm)	ØG (mm)	F (mm)	t (mm)
MTG1501	130	108	M12 x 1.75	7	50	12	5
MTG1502	255	215	M16 x 2.0	14	129	16	6
MTG1503	470	406	M24 x 1.5	20	300	24	8

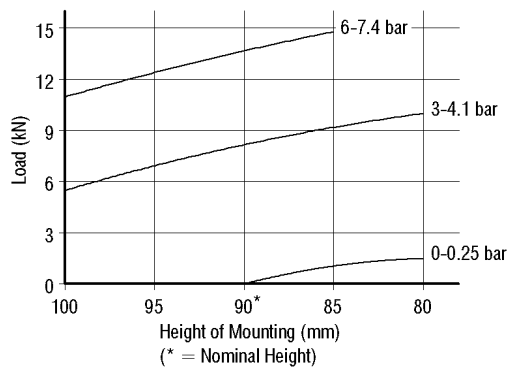
**Part No. AIR-MTG1501**



Vertical Loading:  
 Minimum Recommended: 0.5kN  
 Maximum Permissible: 2.0kN

Stiffness Characteristics:  
 Vertical : Horizontal @ Pressure  
 1 : 1.8 @ 0 bar  
 1 : 1.5 @ 3 bar  
 1 : 1.0 @ 6 bar

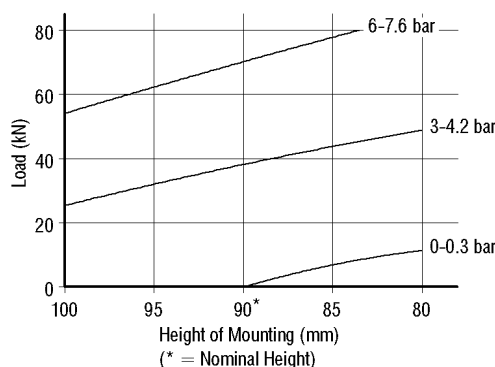
**Part No. AIR-MTG1502**



Vertical Loading:  
 Minimum Recommended: 2.0kN  
 Maximum Permissible: 10.0kN

Stiffness Characteristics:  
 Vertical : Horizontal @ Pressure  
 1 : 3.2 @ 0 bar  
 1 : 1.8 @ 3 bar  
 1 : 1.6 @ 6 bar

**Part No. AIR-MTG1503**



Vertical Loading:  
 Minimum Recommended: 10.0kN  
 Maximum Permissible: 50.0kN

Stiffness Characteristics:  
 Vertical : Horizontal @ Pressure  
 1 : 3.1 @ 0 bar  
 1 : 1.7 @ 3 bar  
 1 : 1.2 @ 6 bar