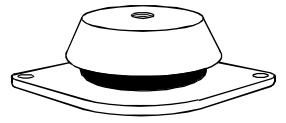
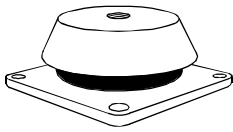
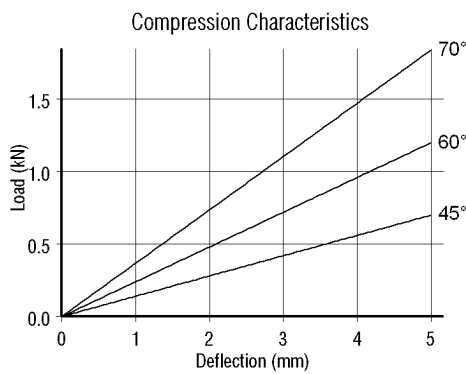
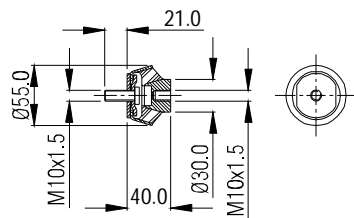


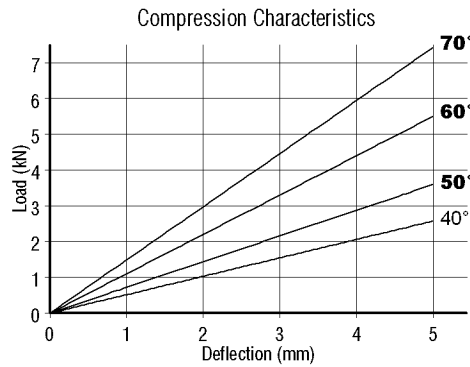
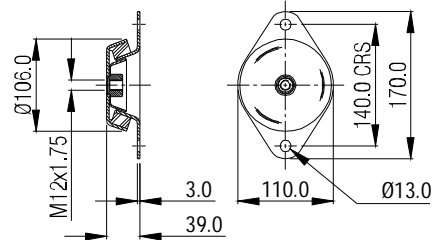
A variety of sizes is available with many held in stock. Different styles of machine feet can be supplied with or without rebound control and with a square or oval flange. Rubber hardness' shown in bold type are more generally available.



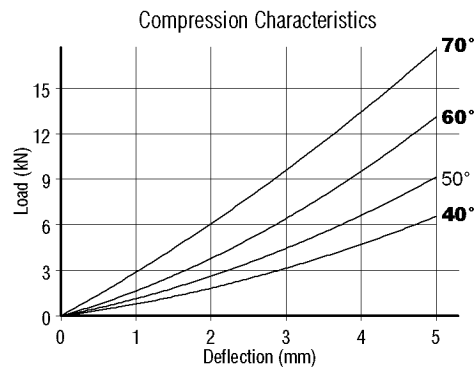
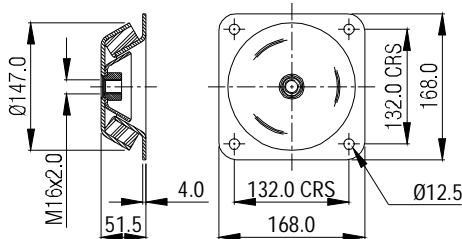
Part No. M/C-MF1060



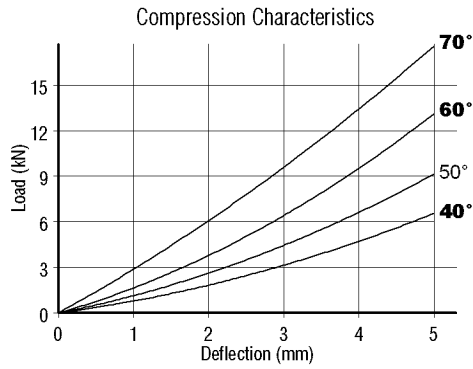
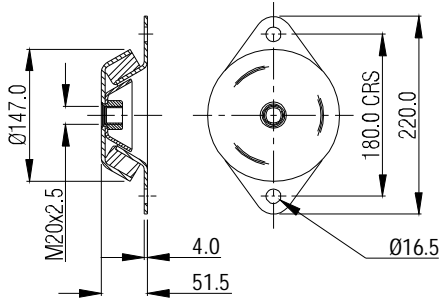
Part No. M/C-MF1890



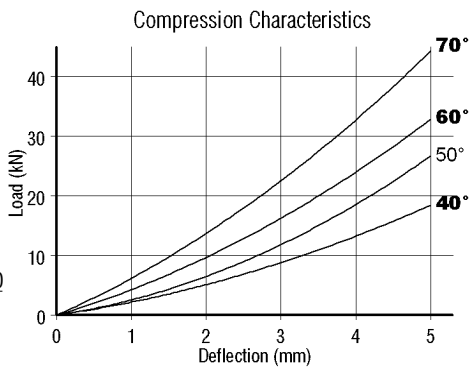
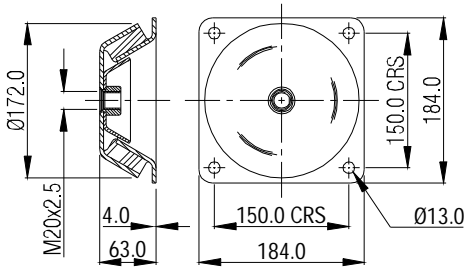
Part No. M/C-MF1891



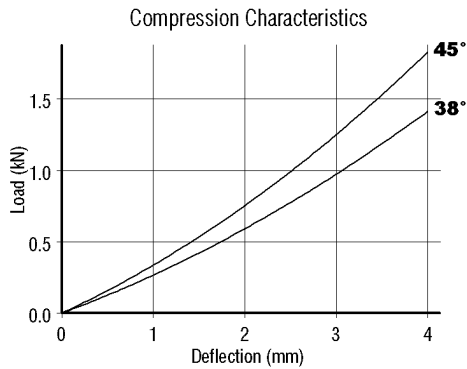
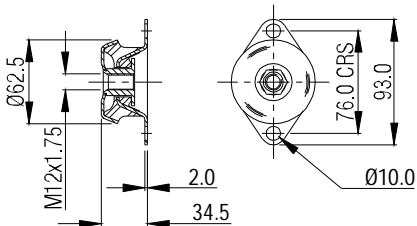
Part No. M/C-MF1892



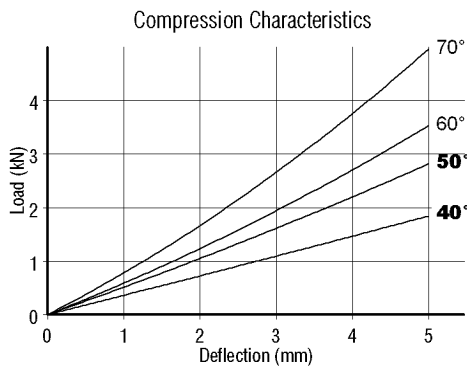
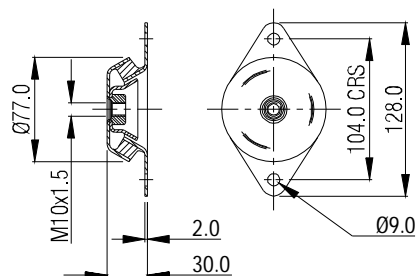
Part No. M/C-MF1893



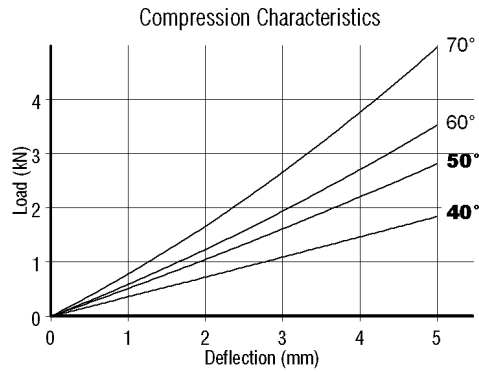
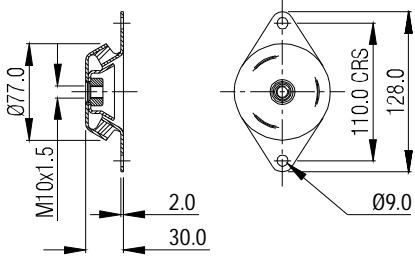
Part No. M/C-MF1783



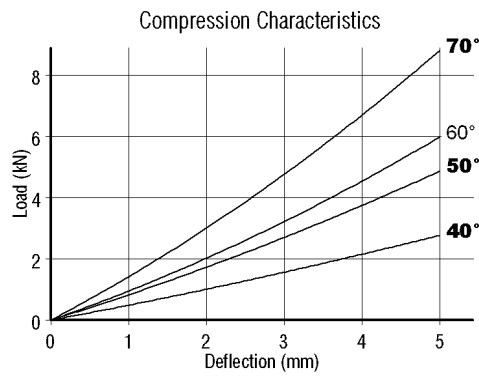
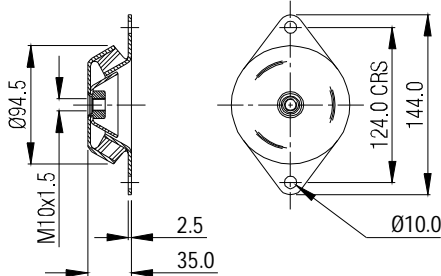
Part No. M/C-MF1900



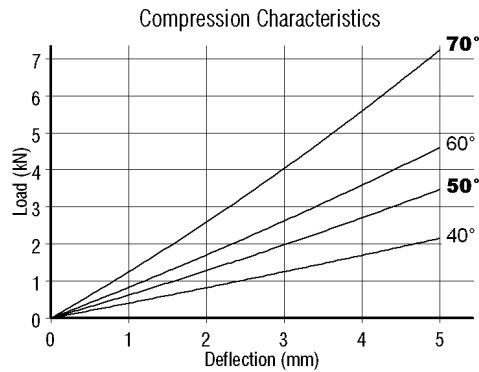
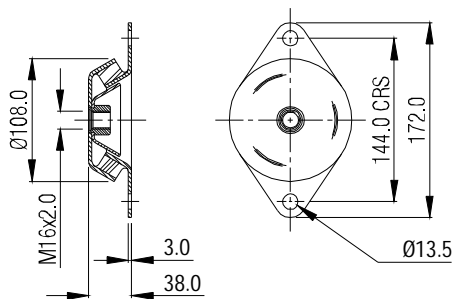
Part No. M/C-MF1901



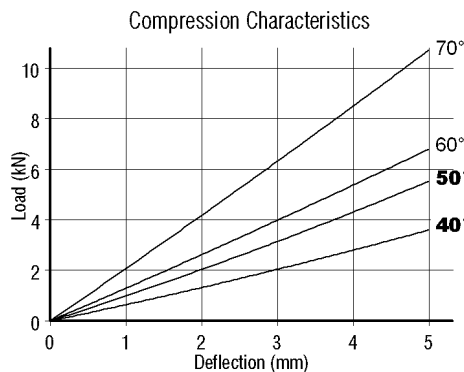
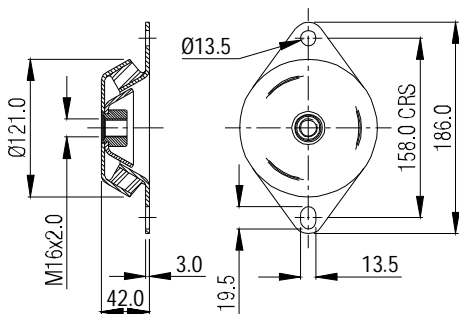
Part No. M/C-MF1902



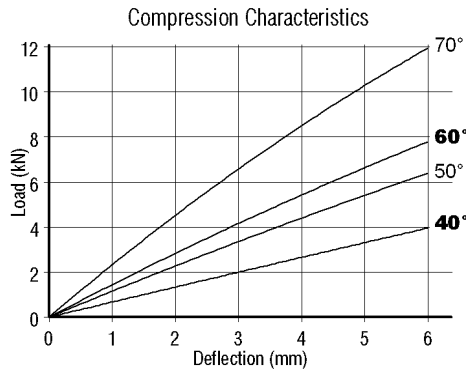
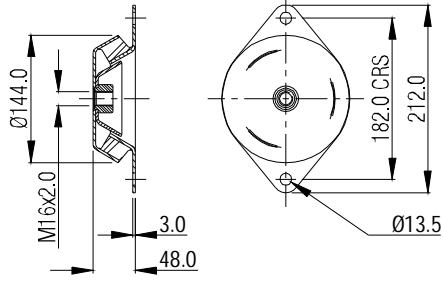
Part No. M/C-MF1903



Part No. M/C-MF1904



Part No. M/C-MF1905



Part No. M/C-MF1906

