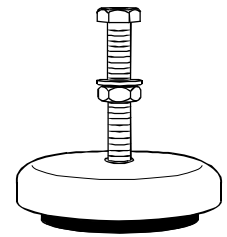
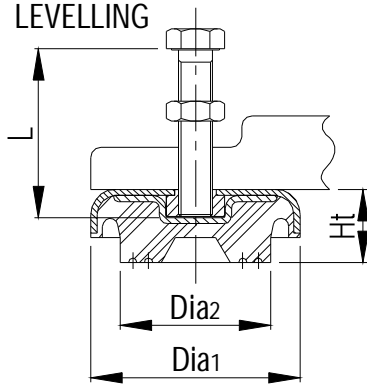


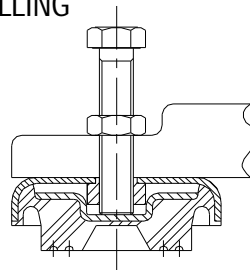
A variety of sizes is available with many held in stock. These adjustable machine feet are free-standing and enable levelling. Standard parts are manufactured in chloroprene rubber.



PRIOR TO  
LEVELLING



AFTER  
LEVELLING



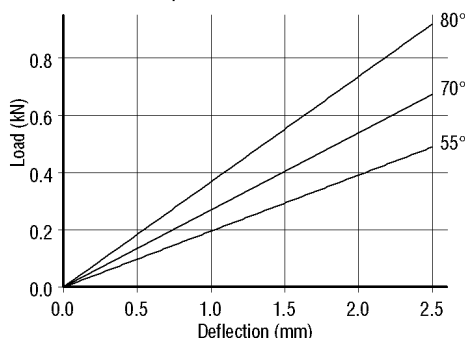
• = STANDARD STOCK

Compounds Produced: 55° Shore A (Soft)  
(Chloroprene Rubber) 70° Shore A (Medium)  
80° Shore A (Hard)

Part Number	Dia1 (mm)	Dia2 (mm)	Ht (mm)	Screw Thread Size	Bolt Length L (mm)
AMF1011	30	18	15	M6 x 0.5	30
•AMF1012	50	36	21	M10 x 1.0	60
•AMF1013	75	52	25	M12 x 1.5	80
•AMF1014	100	72	35	M16 x 1.5	100
•AMF1015	150	115	45	M20 x 1.5	120
•AMF1016	200	160	45	M20 x 1.5	120
•AMF1017	258	202	50	M24 x 1.5	180

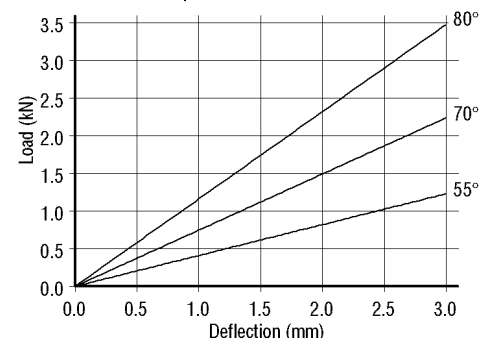
Part No. ADJ-AMF1011

Compression Characteristics



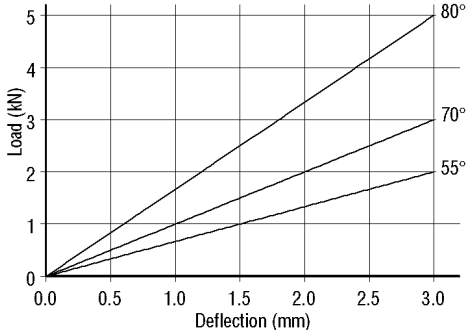
Part No. ADJ-AMF1012

Compression Characteristics



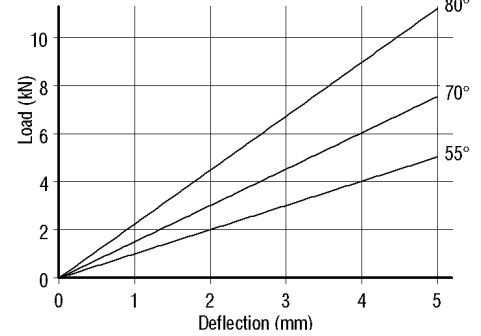
Part No. ADJ-AMF1013

Compression Characteristics



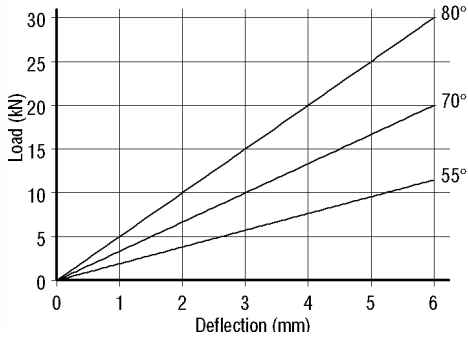
Part No. ADJ-AMF1014

Compression Characteristics



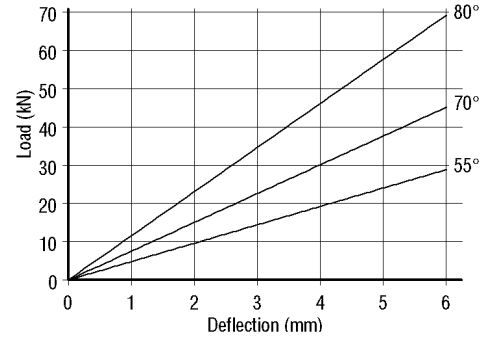
Part No. ADJ-AMF1015

Compression Characteristics



Part No. ADJ-AMF1016

Compression Characteristics



Part No. ADJ-AMF1017

Compression Characteristics

