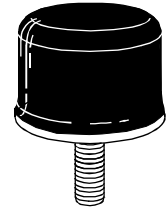
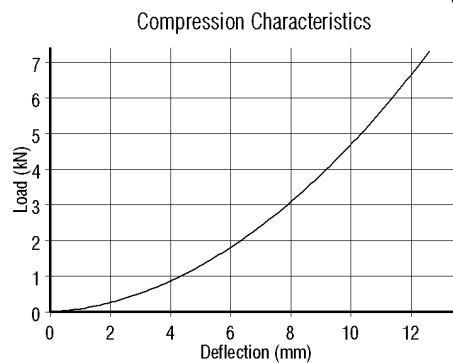
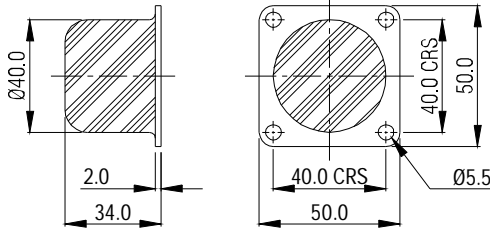


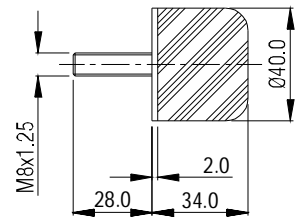
Suitable for absorbing high shock loads, stop buffers are available with either a mounting plate or a single fixing stud. A range of sizes is available with many held in stock. Standard parts are manufactured in natural rubber 71° Shore A.



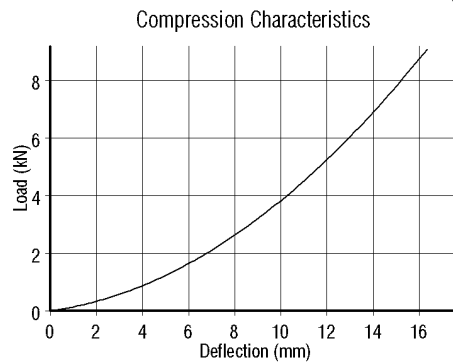
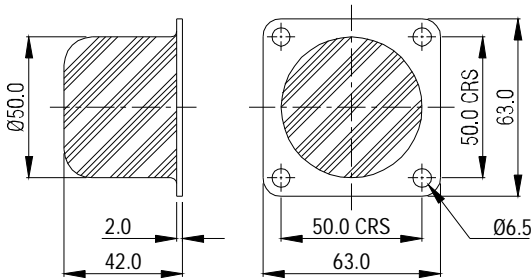
Part No. STOP-RB1069



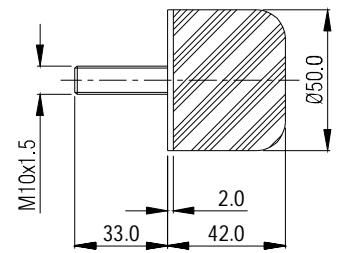
Part No. STOP-BF1000



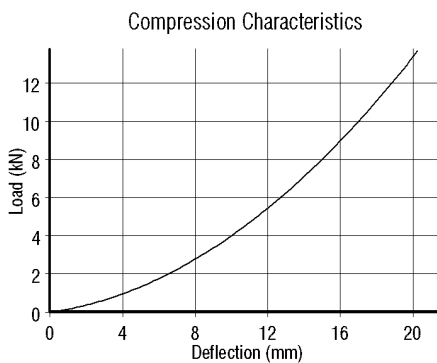
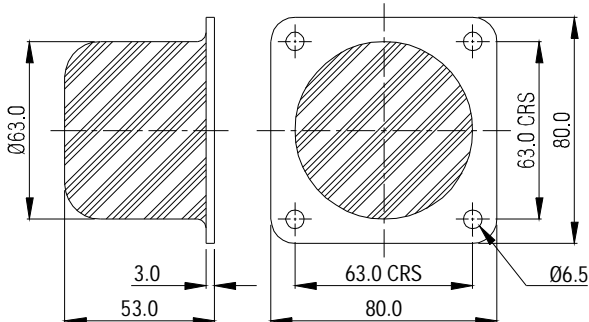
Part No. STOP-RB1070



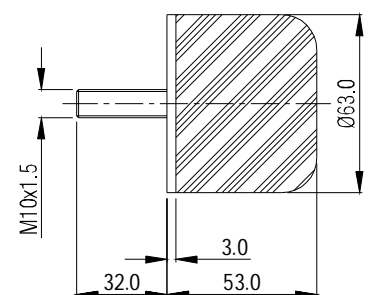
Part No. STOP-BF1001



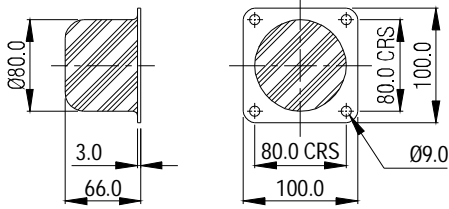
Part No. STOP-RB1071



Part No. STOP-BF1002

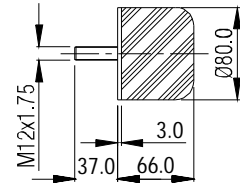
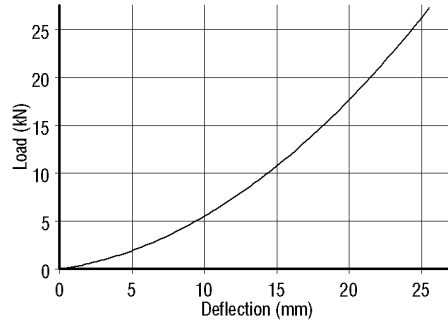


Part No. STOP-RB1072

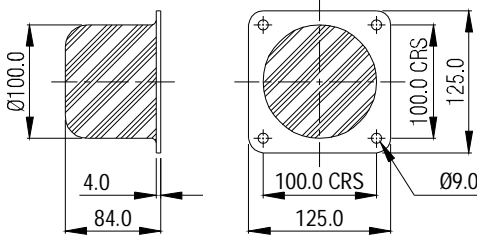


Part No. STOP-BF1003

Compression Characteristics

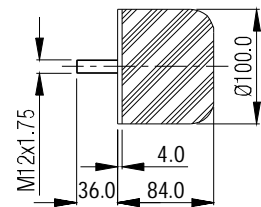
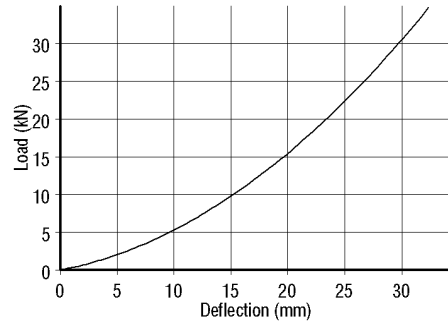


Part No. STOP-RB1073

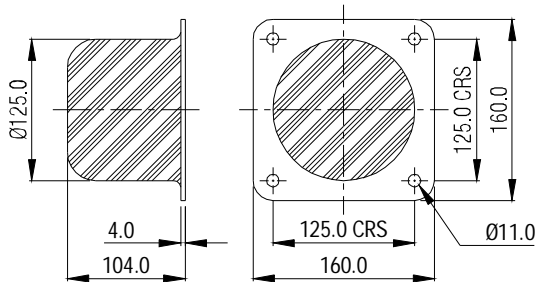


Part No. STOP-BF1004

Compression Characteristics

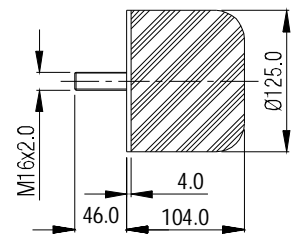
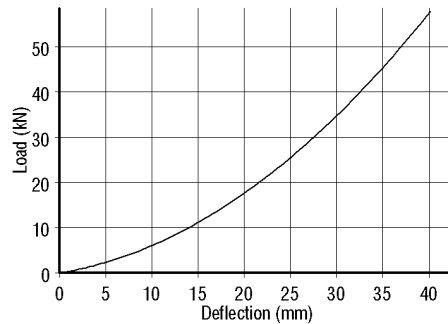


Part No. STOP-RB1074

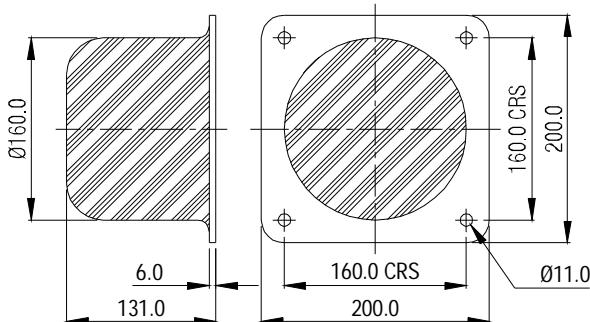


Part No. STOP-BF1005

Compression Characteristics

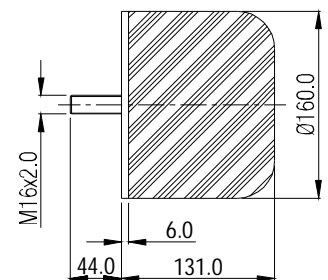
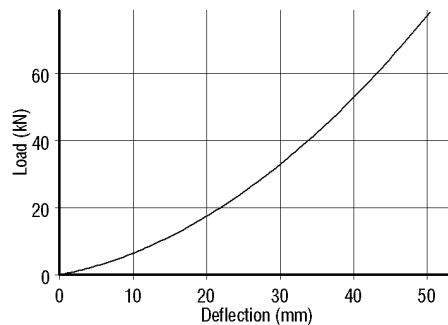


Part No. STOP-RB1075



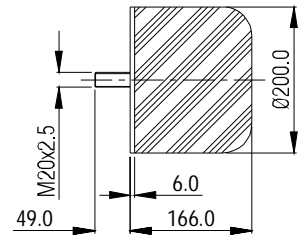
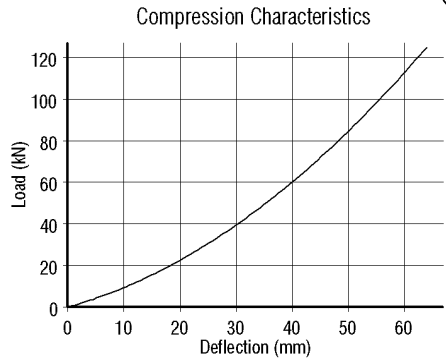
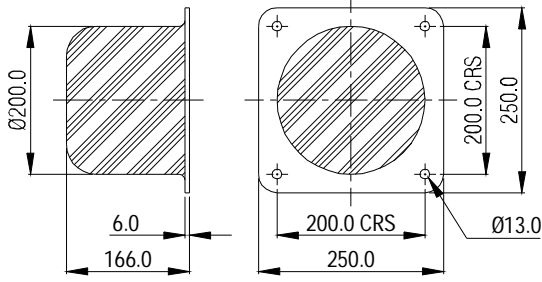
Part No. STOP-BF1006

Compression Characteristics



Part No. STOP-RB1076

Part No. STOP-BF1007



Part No. STOP-RB1077

Part No. STOP-BF1008

