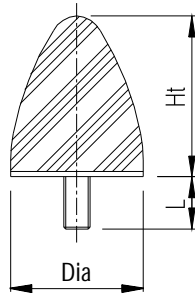
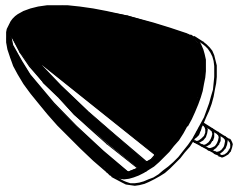
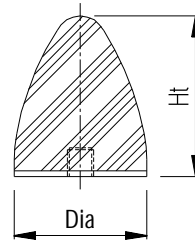
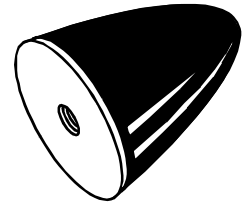


Type KP/D



Type KP/E



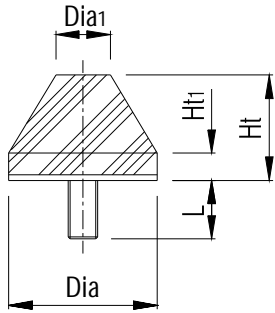
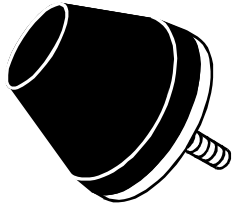
• = STANDARD STOCK Compounds Produced: 43° Shore A (Soft)
 (Natural Rubber) 57° Shore A (Medium)
 68° Shore A (Hard)

Dimensions Dia/Ht (mm)	Screw Thread Size x L (mm)	Special Screw Thread Sizes (mm)
• 30/36 *	M8 x 20	M6 x 15, M8 x 8 M8 x 10, M8 x 13 M8 x 16, M8 x 18 M8 x 23, M8 x 27
• 50/58 *	M10 x 28	M8 x 23, M10 x 15
• 50/61	M10 x 28	M10 x 20, M10 x 33
• 50/68 *	M8 x 36	M12 x 27
75/89	M12 x 37	M12 x 27, M12 x 32
• 115/133 *	M16 x 45	

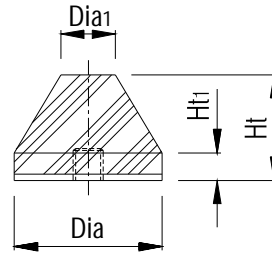
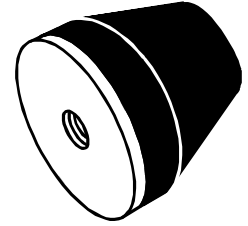
Dimensions Dia/Ht (mm)	Screw Thread Size	Special Screw Thread Sizes (mm)
30/36	M8	
50/58	M10	
50/61	M10	M8, M12
50/68	M10	
75/89	M12	M16
115/133	M16	

* These parts are only standard in natural rubber of hardness 57° Shore A.

Type KS/D



Type KS/E



Compounds Produced: 43° Shore A (Soft)
 (Natural Rubber) 57° Shore A (Medium)
 68° Shore A (Hard)

Dimensions Dia/Ht (mm)	Screw Thread Size x L (mm)	Special Screw Thread Sizes (mm)
15/20 (Ht1 - 10mm, Dia1 - 7.5mm)	M4 x 13	M4 x 6, M4 x 8 M4 x 10, M4 x 15
25/15 (Ht1 - 3mm, Dia1 - 7.5mm)	M6 x 18	M6 x 8, M6 x 10 M6 x 12, M6 x 15
25/28 (Ht1 - 5mm, Dia1 - 5.5mm)	M6 x 18	M6 x 20

Dimensions Dia/Ht (mm)	Screw Thread Size	Special Screw Thread Sizes (mm)
15/20 (Ht1 - 10mm, Dia1 - 7.5mm)	M4	
25/15 (Ht1 - 3mm, Dia1 - 7.5mm)	M6	
25/28 (Ht1 - 5mm, Dia1 - 5.5mm)	M6	