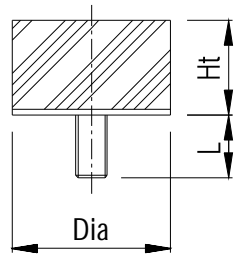
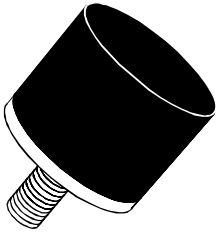


Type D



• = STANDARD STOCK

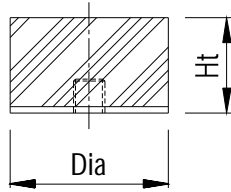
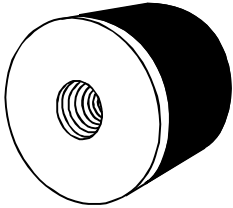
 Compounds Produced: 43° Shore A (Soft)
 (Natural Rubber) 57° Shore A (Medium)
 68° Shore A (Hard)

Dimensions Dia/Ht (mm)	Screw Thread Size x L (mm)	Special Screw Thread Sizes (mm)
6/6	M3 x 6	
6/7	M3 x 6	
7/6	M3 x 6	
8/8	M3 x 6	
• 10/10	M4 x 10	M3 x 5, M5 x 5
10/15	M4 x 10	M5 x 10
12/8	M4 x 12	
12/13	M4 x 12	
12/13.5	M4 x 12	
13/26	M4 x 10	
15/6	M4 x 13	
15/8	M4 x 13	
15/13	M4 x 13	M4 x 8, M4 x 10
15/15	M4 x 13	M4 x 15, M5 x 15
15/18	M4 x 13	
15/28	M4 x 13	
• 18/7.5	M6 x 16	M6 x 10
20/5	M6 x 15	
20/12	M6 x 15	
20/13.5	M6 x 15	M6 x 8, M6 x 10
• 20/15 *	M6 x 15	M6 x 12, M6 x 18
20/20	M6 x 15	M6 x 20
20/23	M6 x 15	
20/25	M6 x 15	
25/5	M6 x 18	
25/6	M6 x 18	
25/8	M6 x 18	
25/13	M6 x 18	M6 x 6, M6 x 8
25/15	M6 x 18	M6 x 10, M6 x 12
• 25/17	M6 x 18	M6 x 15, M6 x 20
25/20	M6 x 18	
25/25	M6 x 18	
25/28	M6 x 18	
30/5.5	M8 x 20	
30/10	M8 x 20	
30/15	M8 x 20	
• 30/17 *	M8 x 20	M8 x 8, M8 x 10
• 30/20	M8 x 20	M8 x 13, M8 x 16
30/25	M8 x 20	M8 x 18, M8 x 23
30/28	M8 x 20	M8 x 27
30/30	M8 x 20	
30/40	M8 x 20	
30/55	M8 x 20	

Dimensions Dia/Ht (mm)	Screw Thread Size x L (mm)	Special Screw Thread Sizes (mm)
40/5	M8 x 23	
40/6	M8 x 23	
40/10	M8 x 23	
40/15	M8 x 23	
40/18	M8 x 23	M8 x 12, M8 x 13
40/20	M8 x 23	M8 x 16, M8 x 28
• 40/28	M8 x 23	M10 x 20
40/38	M8 x 23	
40/40	M8 x 23	
40/50	M8 x 23	
50/17	M10 x 28	
• 50/21	M10 x 28	M8 x 23, M10 x 15
50/27	M10 x 28	M10 x 20, M10 x 33
50/36	M10 x 28	M12 x 27
50/42	M10 x 28	
50/45	M10 x 28	
70/42	M10 x 30	
70/45	M10 x 30	M10 x 25
75/15	M12 x 37	
• 75/25	M12 x 37	M12 x 27, M12 x 32
75/36	M12 x 37	
75/51	M12 x 37	
80/40	M12 x 37	M12 x 27
100/35	M16 x 45	
100/40	M16 x 45	
100/50	M16 x 45	M12 x 37, M16 x 37
100/100	M16 x 45	
125/38	M16 x 45	
125/60	M16 x 45	
150/40	M16 x 45	
150/45	M16 x 45	M20 x 45
150/75	M16 x 45	
160/30	M16 x 45	
160/47	M16 x 45	M20 x 45
200/100	M20 x 45	
250/48	M20 x 45	

* These parts are only standard in natural rubber of hardness 57° Shore A

Type E



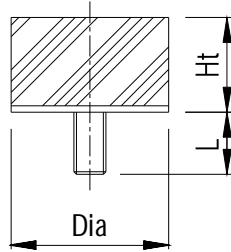
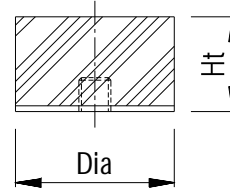
• = STANDARD STOCK

Compounds Produced: 43° Shore A (Soft)
 (Natural Rubber) 57° Shore A (Medium)
 68° Shore A (Hard)

Dimensions Dia/Ht (mm)	Screw Thread Size	Special Screw Thread Sizes (mm)
6/6	M3	
6/7	M3	
7/6	M3	
8/8	M3	
10/10	M4	M3, M5
10/15	M4	
12/13	M4	
12/13.5	M4	
13/26	M4	
15/13	M4	M5
15/15	M4	
15/18	M4	
15/28	M4	
20/12	M6	M5
20/13.5	M6	
20/15	M6	
20/20	M6	
20/23	M6	
20/25	M6	
25/13	M6	
25/15	M6	
25/17	M6	
25/20	M6	
25/25	M6	
25/28	M6	
30/15	M8	
• 30/17	M8	
• 30/20	M8	
30/25	M8	
30/28	M8	
30/30	M8	
30/40	M8	
30/55	M8	
40/15	M8	M10
40/18	M8	
• 40/20	M8	
40/28	M8	
40/38	M8	
40/40	M8	
40/50	M8	

Dimensions Dia/Ht (mm)	Screw Thread Size	Special Screw Thread Sizes (mm)
50/17	M10	
• 50/21	M10	
50/27	M10	M8, M12
50/36	M10	
50/42	M10	
50/45	M10	
70/42	M10	M12, M16
70/45	M10	
75/25	M12	
75/36	M12	M16
75/51	M12	
80/40	M12	
100/35	M16	M12
100/40	M16	
100/50	M16	
100/100	M16	
125/38	M16	M20
125/60	M16	
150/40	M16	M20
150/45	M16	
150/75	M16	
160/30	M16	M20
160/47	M16	
200/100	M20	
250/48	M20	

Spring Characteristics For Types:

D

E


IMPORTANT NOTE: All values of load in the table shown apply to both type D and E buffers. Reference should be made to the beginning of this chapter for load calculations and to Section 1 - Technical Information for selection examples.

Dia/Ht (mm)	Compression Characteristics				Dia/Ht (mm)	Compression Characteristics				Dia/Ht (mm)	Compression Characteristics			
	Defln (mm)	Load (N)				Defln (mm)	Load (N)				Defln (mm)	Load (N)		
		43°	57°	68°			43°	57°	68°			43°	57°	68°
10/10	0.4	8.3	15.9	22.1	25/20	0.9	83.0	115.4	166.7	50/27	1.3	307.7	553.2	804.7
	0.9	18.7	35.7	49.7		1.8	165.9	230.8	333.3		2.5	591.8	1063.8	1547.5
	1.3	27.0	51.6	71.8		2.7	248.9	346.2	500.0		3.8	899.5	1617.0	2352.3
	(MAX)					(MAX)					(MAX)			
15/13	0.6	23.7	43.7	64.0	25/28	1.3	56.5	104.3	149.4	50/42	2.0	243.2	443.2	640.8
	1.2	47.5	87.5	127.9		2.6	113.0	208.6	298.8		4.0	486.5	886.5	1281.6
	1.7	67.3	123.9	181.2		3.9	169.6	313.0	448.2		6.0	729.7	1329.7	1922.4
	(MAX)					(MAX)					(MAX)			
15/28	1.3	19.1	34.5	50.9	30/15	0.7	127.3	229.6	336.1	70/42	2.0	540.3	1013.9	1393.1
	2.7	39.7	71.8	105.8		1.3	236.5	426.4	624.2		3.9	1053.6	1977.1	2716.5
	4.0	58.8	106.3	156.8		2.0	363.8	656.1	960.3		5.9	1593.8	2991.0	4109.6
	(MAX)					(MAX)					(MAX)			
18/7.5	0.3	56.7	100.0	147.6	30/17	0.8	113.7	207.2	300.6	75/25	1.1	1227.8	2193.4	3142.9
	0.6	113.4	200.0	295.2		1.5	213.2	388.4	563.6		2.2	2455.6	4386.8	6285.7
	0.9	170.1	300.0	442.9		2.3	326.9	595.6	864.2		3.3	3683.3	6580.2	9428.6
	(MAX)					(MAX)					(MAX)			
20/12	0.5	47.3	87.8	125.0	30/20	0.9	99.5	179.5	261.0	75/36	1.7	788.6	1403.1	2034.0
	1.0	94.6	175.5	250.0		1.8	198.9	359.0	522.0		3.3	1530.8	2723.8	3948.4
	1.5	142.0	263.3	375.0		2.7	298.4	538.6	782.9		5.0	2319.3	4126.9	5982.4
	(MAX)					(MAX)					(MAX)			
20/13.5	0.6	46.2	84.1	126.9	30/28	1.3	83.3	156.9	248.0	75/51	2.4	610.4	1100.1	1592.2
	1.2	92.3	168.3	253.9		2.6	166.5	313.9	496.0		4.8	1220.9	2200.3	3184.5
	1.7	130.8	238.4	359.6		3.9	249.8	470.8	744.0		7.2	1831.3	3300.4	4776.7
	(MAX)					(MAX)					(MAX)			
20/23	1.1	37.9	70.1	102.5	40/28	1.3	170.8	308.6	450.9	100/35	1.6	1826.7	3320.6	4812.5
	2.1	72.4	133.8	195.7		2.6	341.5	617.1	901.8		3.1	3539.3	6433.7	9324.2
	3.2	110.3	203.8	298.2		3.9	512.3	925.7	1352.7		4.7	5366.0	9754.3	14136.7
	(MAX)					(MAX)					(MAX)			
20/25	1.2	38.1	68.3	98.9	40/38	1.8	151.5	272.7	400.3	100/40	1.8	1576.7	2850.8	4070.1
	2.3	73.1	130.9	189.6		3.6	302.9	545.5	800.6		3.6	3153.5	5701.5	8140.2
	3.5	111.2	199.2	288.5		5.4	454.4	818.2	1200.9		5.4	4730.2	8552.3	12210.3
	(MAX)					(MAX)					(MAX)			
25/13	0.6	85.7	155.9	226.5	50/17	0.8	483.9	877.1	1288.8	100/50	2.3	1240.0	2203.0	3277.4
	1.1	157.1	285.8	415.3		1.5	907.3	1644.5	2416.5		4.6	2479.9	4406.0	6554.8
	1.7	242.9	441.7	641.9		2.3	1391.1	2521.5	3705.2		6.9	3719.9	6609.0	9832.2
	(MAX)					(MAX)					(MAX)			
25/17	0.8	73.7	133.0	195.3	50/21	1.0	374.4	678.3	979.5	100/100	4.8	943.0	1698.6	2456.3
	1.5	138.3	249.4	366.2		1.9	711.3	1288.8	1861.1		9.6	1886.1	3397.2	4912.6
	2.3	212.0	382.5	561.4		2.9	1085.7	1967.1	2840.7		14.4	2829.1	5095.8	7368.9
	(MAX)					(MAX)					(MAX)			