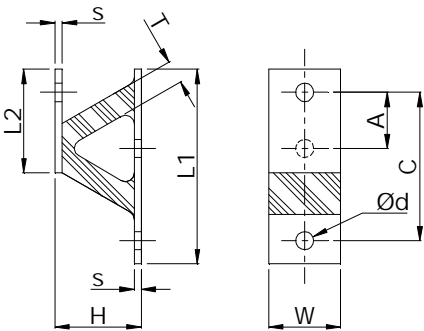


Device Mountings

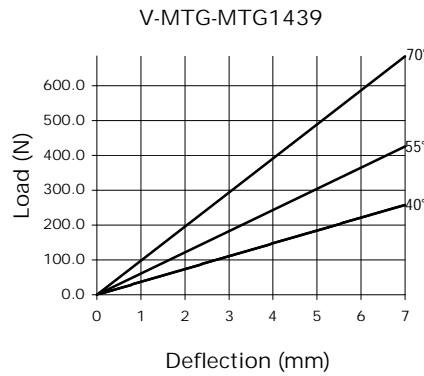
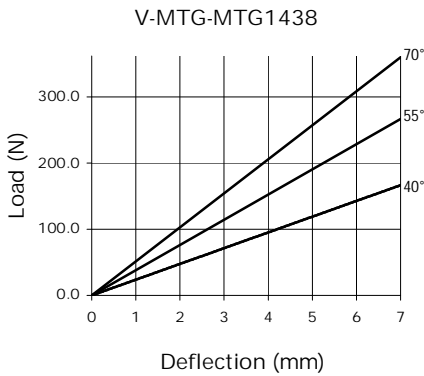
A range of sizes is available from existing tooling, with some held in stock. Parts may be subject to minimum order quantities. They are generally used in compression though some styles can be used in shear.

Dimensions

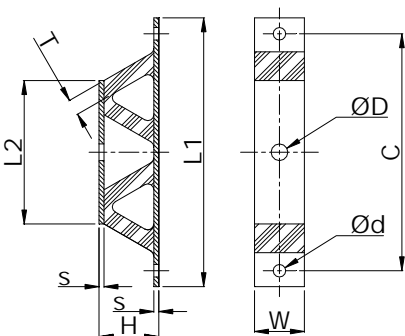


Part No.	L1 (mm)	H (mm)	W (mm)	L2 (mm)	C (mm)	A (mm)	Ød (mm)	s (mm)	T (mm)
MTG1438	67.5	30.0	25.0	36.0	51.5	19.5	6.3	2.5	8.0
MTG1439	67.5	30.0	25.0	36.0	51.5	19.5	6.3	2.5	10.0

Compression Characteristics

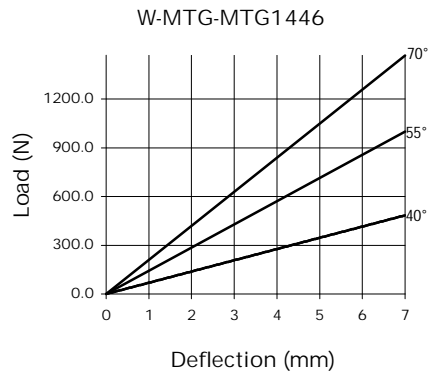
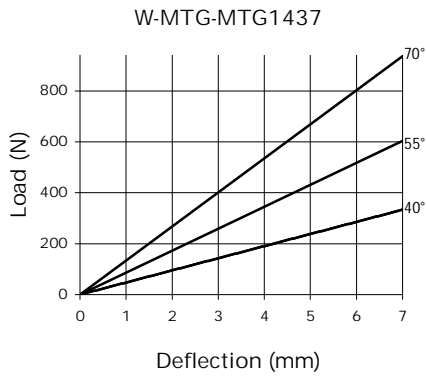


Note: There is a possible deviation of $\pm 20\%$ in the above load/deflection graphs due to production and hardness tolerances



Part No.	L1 (mm)	H (mm)	W (mm)	L2 (mm)	C (mm)	ØD (mm)	Ød (mm)	s (mm)	T (mm)
MTG1437	135.0	30.0	25.0	72.0	119.0	8.4	6.3	2.5	8.0
MTG1446	135.0	30.0	25.0	72.0	119.0	8.4	6.3	2.5	10.0

Compression Characteristics



Note: There is a possible deviation of $\pm 20\%$ in the above load/deflection graphs due to production and hardness tolerances