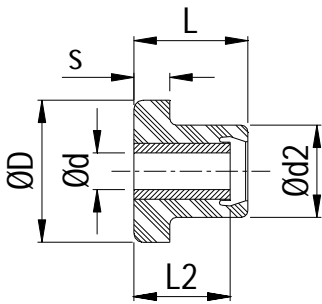




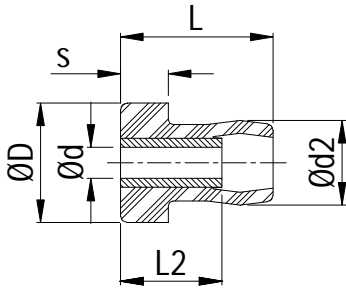
T Mounts

Standard parts are manufactured in chloroprene rubber or natural rubber. Minimum order quantities may apply unless parts are available from stock.

Dimensions



Part No.	Ød (mm)	ØD (mm)	L (mm)	Ød2 (mm)	L2 (mm)	s (mm)
T-MTG1676	10.16	27.69	26.17	20.45	15.88	6.35
T-MTG1674	10.22	25.91	13.97	19.43	11.56	5.08
T-MTG1679	13.00	44.45	31.75	31.50	25.40	9.65
T-MTG1682	13.21	50.80	41.66	34.04	33.27	13.72
T-MTG1691	16.26	63.50	30.23	38.10	23.88	15.75
T-MTG1697	16.34	75.31	56.39	50.04	50.80	20.58
T-MTG1685	17.02	50.80	31.75	34.30	25.40	13.46
T-MTG1708	20.40	95.25	63.50	56.64	50.80	25.40



Part No.	Ød (mm)	ØD (mm)	L (mm)	Ød2 (mm)	L2 (mm)	s (mm)
T-MTG1692	16.51	63.50	81.0	40.64	53.85	25.40

Example of Installation

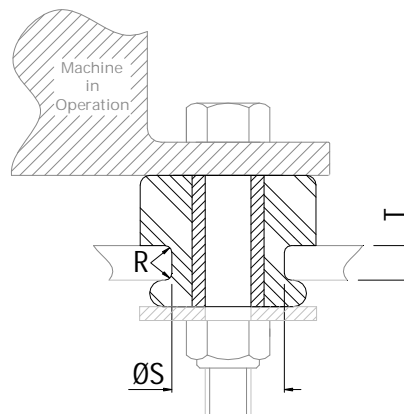


Table of Installation Dimensions

Part No.	ØS (Support Structure)	T (Support Structure)	R (Support Structure)
	(mm)	(mm)	(mm)
T-MTG1676	18.80	7.87	1.0
T-MTG1674	19.05	3.43	1.0
T-MTG1679	28.45	9.65	1.5
T-MTG1682	31.75	15.75	-
T-MTG1691	-	-	-
T-MTG1692	38.10	19.05	-
T-MTG1697	45.97	23.62	-
T-MTG1685	31.75	6.35	-
T-MTG1708	50.8	19.05	-