

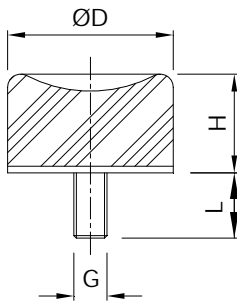
## Suction Feet



Used as mounting feet, a range of sizes is available with many held in stock. Standard parts are manufactured in coloured natural rubber

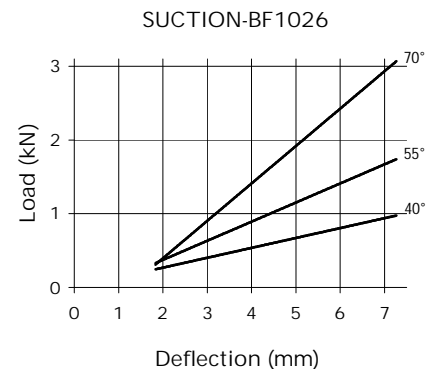
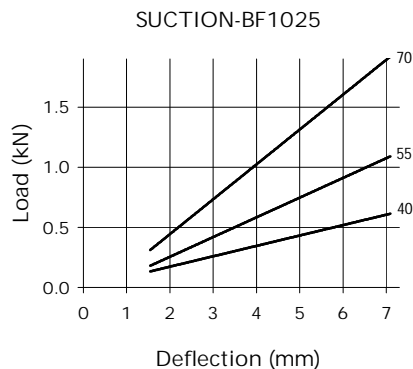
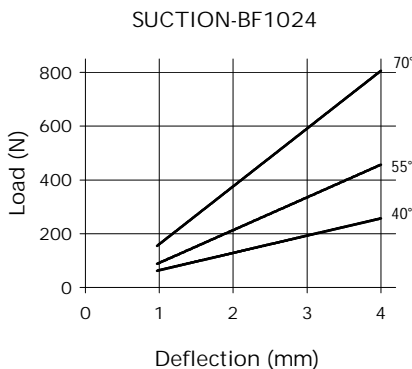
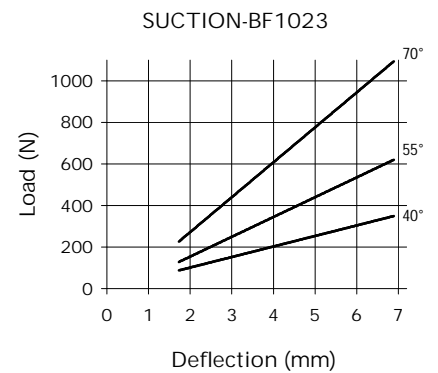
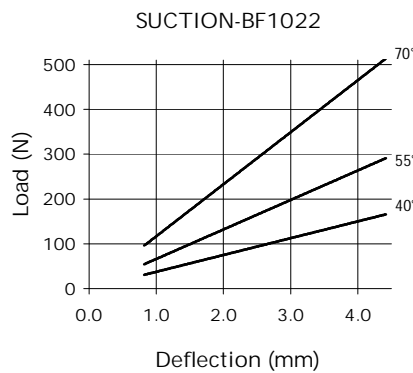
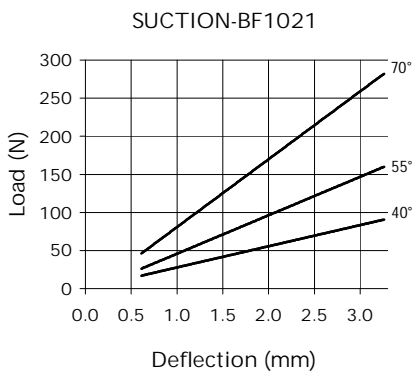
40° Shore A (soft—colour coded green)  
 55° Shore A (medium—colour coded red)  
 70° Shore A (hard—colour coded beige)

### Dimensions



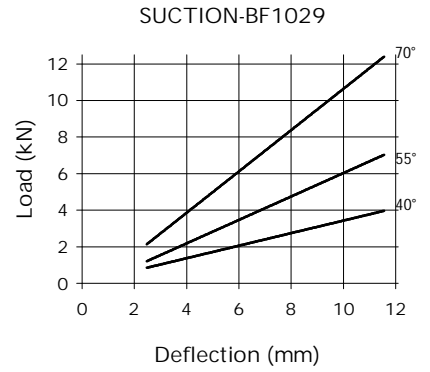
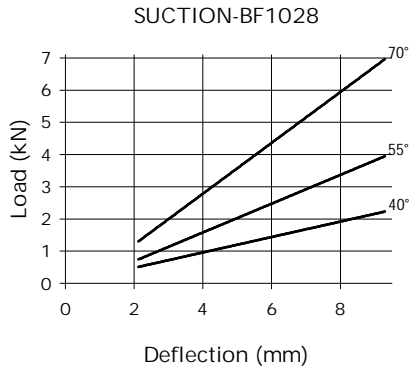
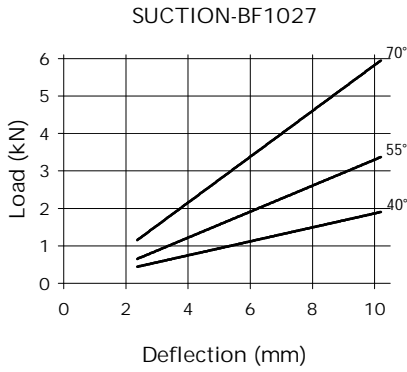
Part No.	D (mm)	H (mm)	L (mm)	G
BF1021	15.0	14.0	13.0	M4
BF1022	20.0	23.5	15.0	M6
BF1023	25.0	18.5	18.0	M6
BF1024	30.0	28.5	20.0	M8
BF1025	40.0	28.5	23.0	M8
BF1026	50.0	28.0	28.0	M10
BF1027	70.0	43.0	30.0	M10
BF1028	75.0	37.0	37.0	M12
BF1029	100.0	50.0	45.0	M16

### Compression Characteristics



Note: There is a possible deviation of ±20% in the above load/deflection graphs due to production and hardness tolerances

## Compression Characteristics Cont'd



Note: There is a possible deviation of  $\pm 20\%$  in the above load/deflection graphs due to production and hardness tolerances

## Special Suction Foot: SUCTION-BF1946

