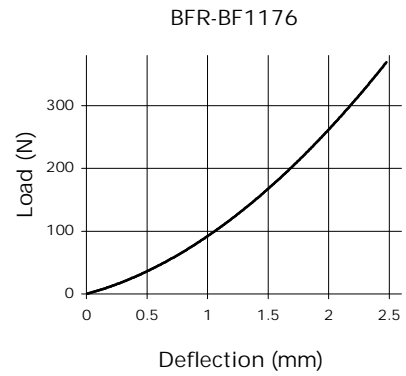
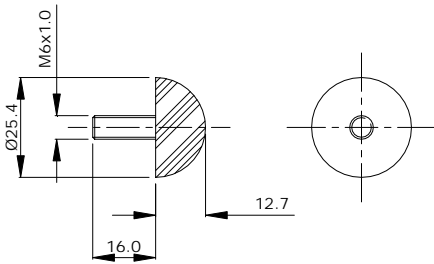


## Special Buffers



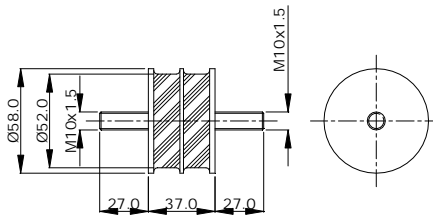
Many types of buffer can be manufactured to meet customers' individual requirements. Minimum order quantities may apply unless parts are available from stock.

### BFR-BF1176

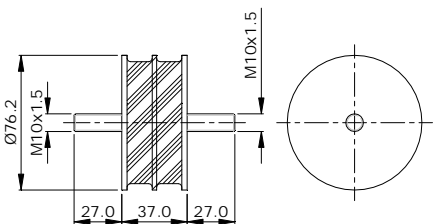


Note: There is a possible deviation of  $\pm 20\%$  in the above load/deflection graphs due to production and hardness tolerances

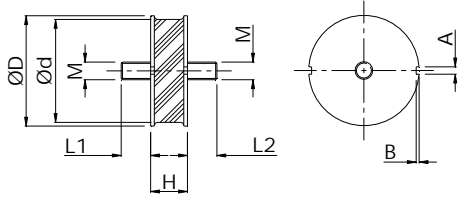
### BFR-BF1148



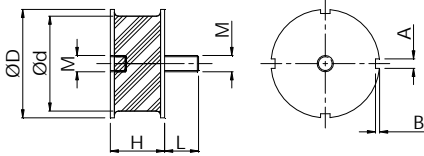
### BFR-BF1490



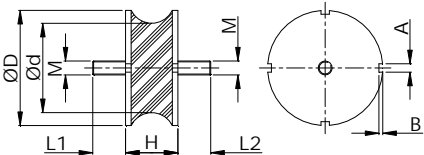
## Dimensions



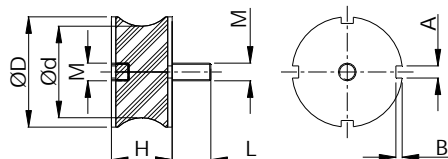
Part No.	ØD (mm)	H (mm)	Ød (mm)	M (mm)	L1 (mm)	L2 (mm)	A (mm)	B (mm)	No. of Slots
BFR-BF2474	52.0	30.0	45.0	M10x1.5	27.5	19.5	-	-	0
BFR-BF1872	75.0	25.0	70.0	M12x1.75	20.0	20.0	5.0	2.0	2
BFR-BF1255	105.0	40.0	95.0	M16x2.0	26.0	16.0	8.5	4.0	2
BFR-BF1254	105.0	55.0	95.0	M16x2.0	26.0	26.0	8.5	4.0	2
BFR-BF1632	105.0	55.0	95.0	M16x2.0	36.0	26.0	8.5	4.0	2
BFR-BF1609	160.0	75.0	150.0	M20x2.5	45.0	45.0	12.0	5.0	2
BFR-BF1610	165.0	75.0	165.0	M20x2.5	45.5	45.5	12.0	6.0	4



Part No.	ØD (mm)	H (mm)	Ød (mm)	M (mm)	L (mm)	A (mm)	B (mm)	No. of Slots
BFR-BF2215	52.0	30.0	45.0	M10x1.5	20.0	5.0	2.0	2
BFR-BF1117	60.0	30.0	60.0	M10x1.5	20.0	-	-	0
BFR-BF2152	72.0	57.5	60.0	M12x1.75	27.0	-	-	0
BFR-BF1871	80.0	40.0	70.0	M12x1.75	25.0	7.0	3.0	4
BFR-BF1868	90.0	50.0	90.0	M12x1.75	15.0	-	-	0
BFR-BF1673	100.0	55.0	100.0	M16x2.0	35.0	-	-	0
BFR-BF1603	105.0	40.0	95.0	M16x2.0	16.0	8.5	4.0	2

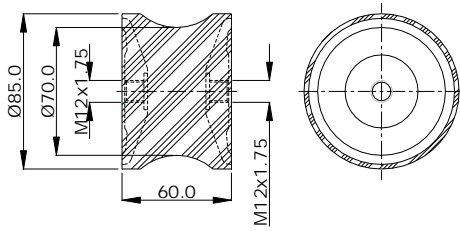


Part No.	ØD (mm)	H (mm)	Ød (mm)	M (mm)	L1 (mm)	L2 (mm)	A (mm)	B (mm)	No. of Slots
BFR-BF2074	55.0	36.0	43.0	M10x1.5	28.0	28.0	-	-	0
BFR-BF1192	100.0	55.0	(83.0)	M16x2.0	35.0	35.0	11.0	6.0	4
BFR-BF2195	118.0	55.0	100.0	M16x2.0	33.0	33.0	-	-	0
BFR-BF1191	165.0	75.0	128.0	M20x2.5	36.0	36.0	12.0	5.5	4
BFR-BF1219	165.0	75.0	128.0	M20x2.5	47.0	47.0	12.0	5.5	4
BFR-BF1608	165.0	75.0	130.0	M20x2.5	35.0	35.0	12.0	5.0	4
BFR-BF1098	165.0	75.0	135.0	M20x2.5	47.0	47.0	12.5	5.5	4



Part No.	ØD (mm)	H (mm)	Ød (mm)	M (mm)	L (mm)	A (mm)	B (mm)	No. of Slots
BFR-BF2056	55.0	36.0	43.0	M10x1.5	28.0	-	-	0
BFR-BF1257	100.0	40.0	85.0	M16x2.0	16.0	11.0	6.0	4
BFR-BF1141	100.0	55.0	83.0	M16x2.0	35.0	-	-	0
BFR-BF1898	165.0	75.0	130.0	M20x2.5	22.0	13.0	6.5	4

## BFR-BF1931



## BFR-BF2232

