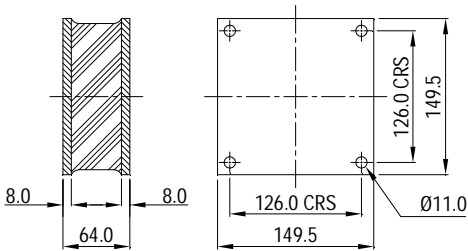


Sandwich Mounts

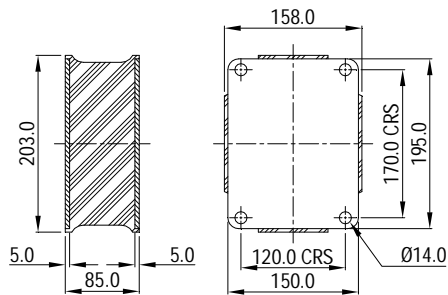


A range of sizes and styles can be manufactured, incorporating mounting holes and/or stud fastenings and one or more interleaves. Minimum order quantities may apply unless parts are available from stock.

MTG-MTG1081

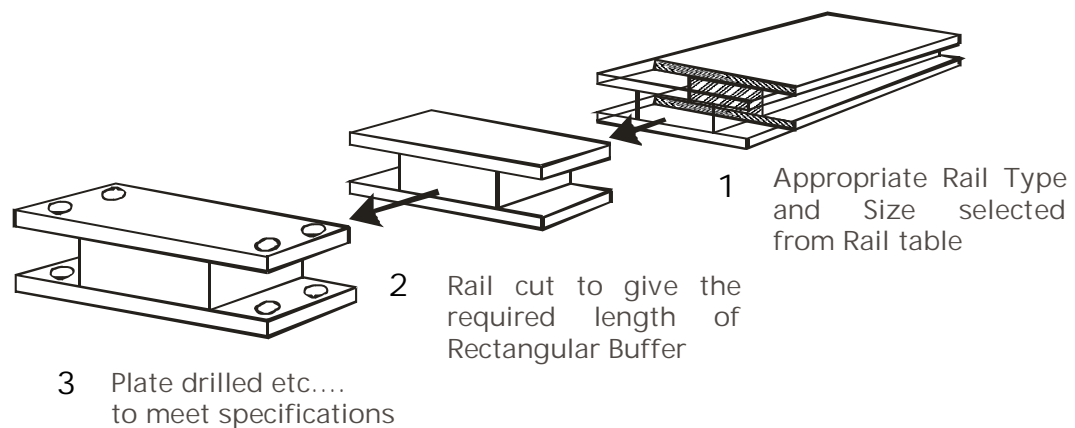


MTG-MTG1085

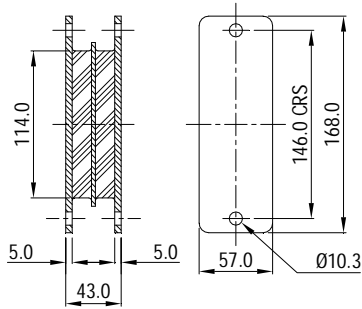


Mountings Cut From Rail

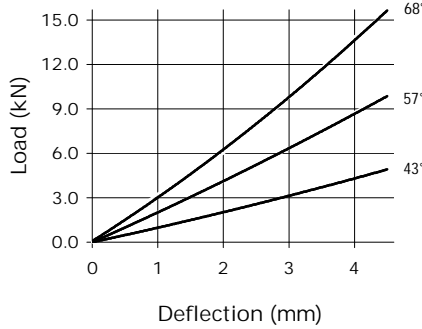
It is possible to Manufacture Mountings from Rail as illustrated. The rail can be supplied as manufactured in 2 metre lengths, or can be cut and drilled to meet the customer's individual requirement. This process has the added advantage that no tooling is normally required.



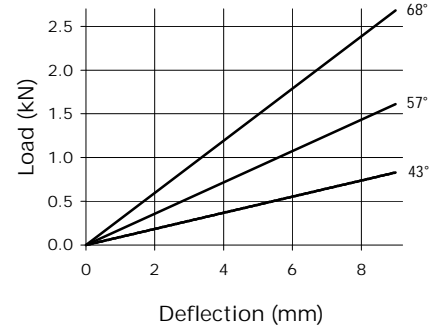
MTG-MTG1109



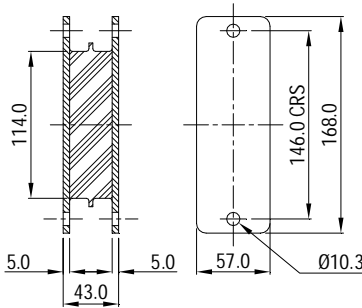
MTG-MTG1109 - COMPRESSION



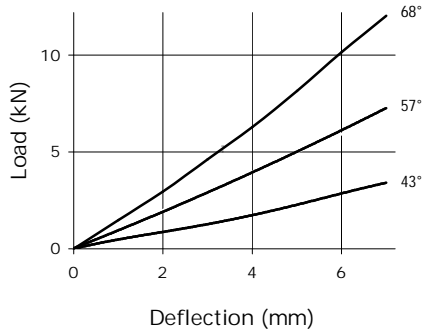
MTG-MTG1109 - SHEAR



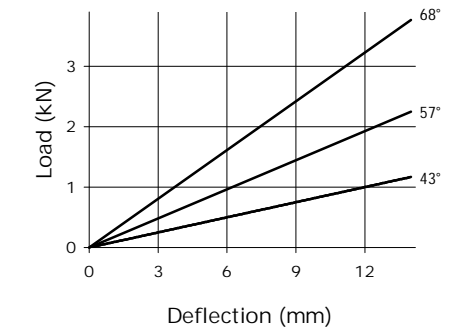
MTG-MTG1136



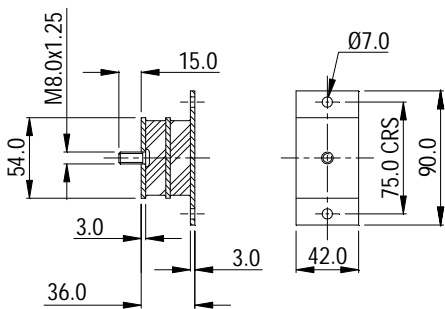
MTG-MTG1136 - COMPRESSION



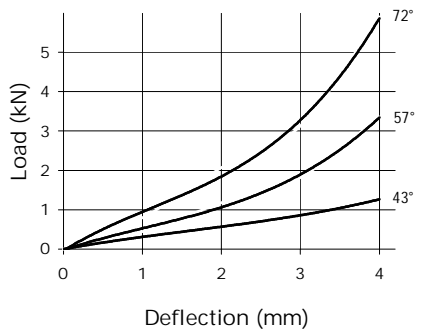
MTG-MTG1136 - SHEAR



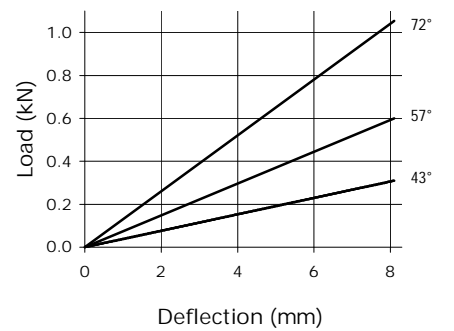
MTG-MTG1169



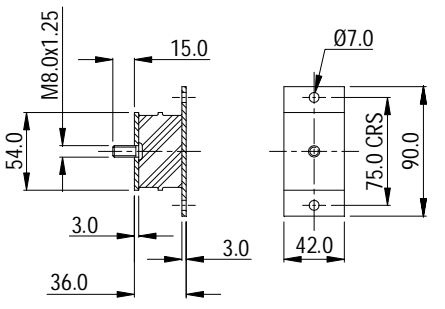
MTG-MTG1169 - COMPRESSION



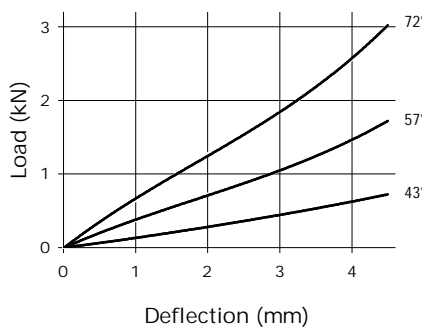
MTG-MTG1169 - SHEAR



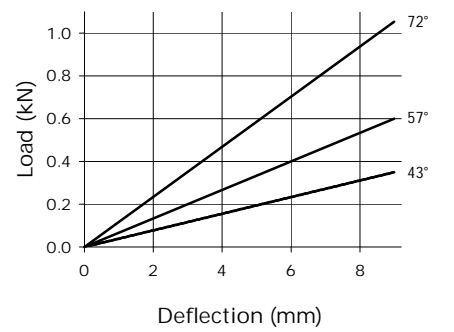
MTG-MTG1177



MTG-MTG1177 - COMPRESSION



MTG-MTG1177 - SHEAR



Note: There is a possible deviation of ±20% in the above load/deflection graphs due to production and hardness tolerances