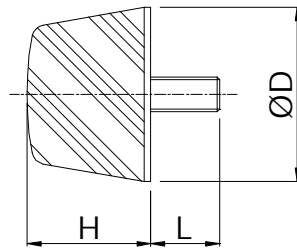


Buffer Type K/D



Compounds Produced:
 (Natural Rubber) 43° Shore A (soft)
 57° Shore A (medium)
 68° Shore A (hard)

Available Sizes

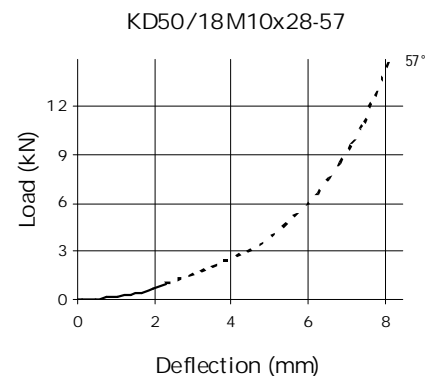
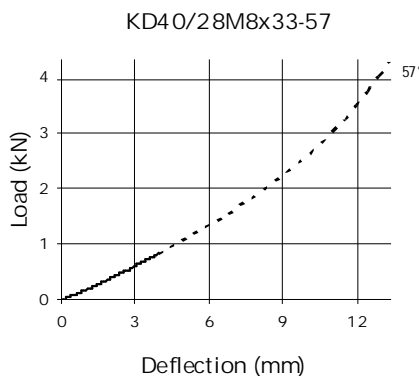
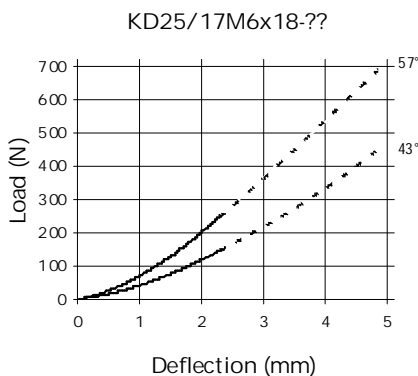
• = STANDARD STOCK

Dimensions Dia/Ht (mm)	Screw Thread Size x L (mm)	Special Screw Thread Size (mm)
• 25/17	M6 x 18	M6 x 8, M6 x 10 M6 x 12, M6 x 15 M6 x 20
40/28 40/53	M8 x 23 M8 x 23	M8 x 12, M8 x 13 M8 x 16, M8 x 28 M10 x 20
• 50/18 50/21 50/22.5 50/30 50/35 • 50/39 *	M10 x 28 M10 x 28 M10 x 28 M10 x 28 M10 x 28 M10 x 28	M8 x 23, M10 x 15 M10 x 20, M10 x 33 M12 x 27
60/22	M10 x 28	M10 x 15, M10 x 20 M10 x 33
75/25 75/28	M12 x 37 M12 x 37	M12 x 27, M12 x 32
• 80/30 ** 80/60	M12 x 32 M12 x 32	M12 x 37
• 125/45 125/80 125/90	M16 x 45 M16 x 45 M16 x 45	

* These parts are only standard in natural rubber of hardness 57° Shore A

** These parts are only available in a rectangular shape (as opposed to circular)

Compression Characteristics

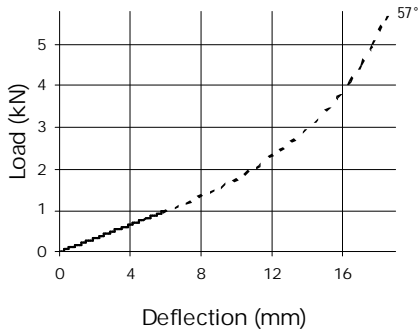


Note: The Load/Deflection graphs are for maximum continuous loads up to 15% strain, the dotted line is for occasional shock loads up to 50% strain

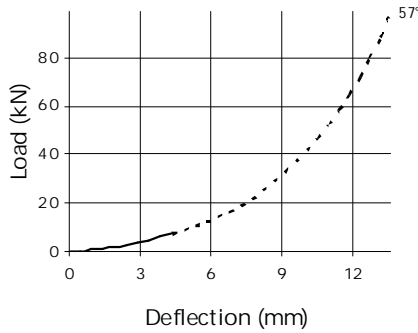
Note: There is a possible deviation of ±20% in the above load/deflection graphs due to production and hardness tolerances

Compression Characteristics

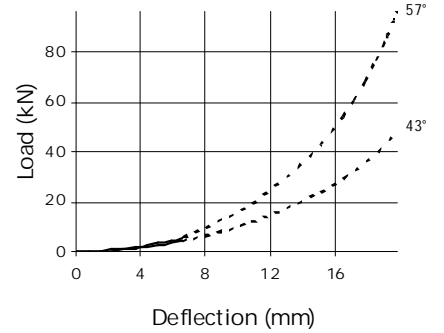
KD50/39M10x28-57



KD80/30M12x32-57



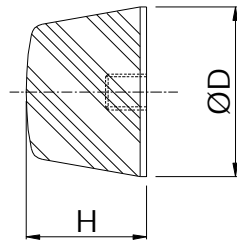
KD125/45M16x45-??



Note: The Load/Deflection graphs are for maximum continuous loads up to 15% strain, the dotted line is for occasional shock loads up to 50% strain

Note: There is a possible deviation of $\pm 20\%$ in the above load/deflection graphs due to production and hardness tolerances

Buffer Type K/E



Compounds Produced:
 (Natural Rubber) 43° Shore A (soft)
 57° Shore A (medium)
 68° Shore A (hard)

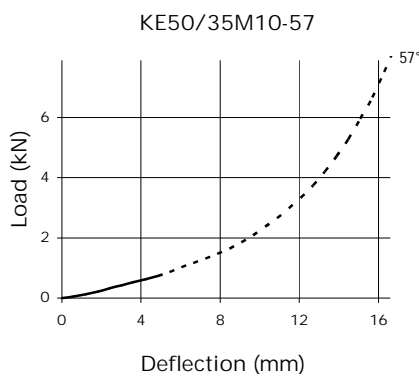
Available

• = STANDARD STOCK

Dimensions Dia/Ht (mm)	Screw Thread Size x L (mm)	Special Screw Thread Size (mm)
25/17	M6	
40/28	M8	
40/53	M8	
50/18	M10	M8, M12
50/21	M10	
50/22.5	M10	
50/30	M10	
• 50/35	M10	
50/39	M10	
60/22	M10	
75/25	M12	M16
75/28	M12	
80/25	M12	
• 80/60 *	M12	
125/45	M16	M20
125/80	M16	
• 125/90 *	M16	

* These parts are only standard in natural rubber of hardness 57° Shore A

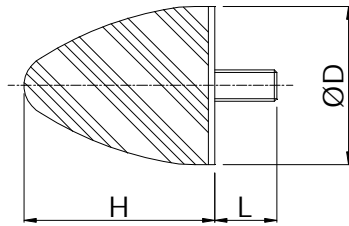
Compression Characteristics



Note: The Load/Deflection graphs are for maximum continuous loads up to 15% strain, the dotted line is for occasional shock loads up to 50% strain

Note: There is a possible deviation of ±20% in the above load/deflection graphs due to production and hardness tolerances

Buffer Type KP/D



Compounds Produced:
 (Natural Rubber)
 43° Shore A (soft)
 57° Shore A (medium)
 68° Shore A (hard)

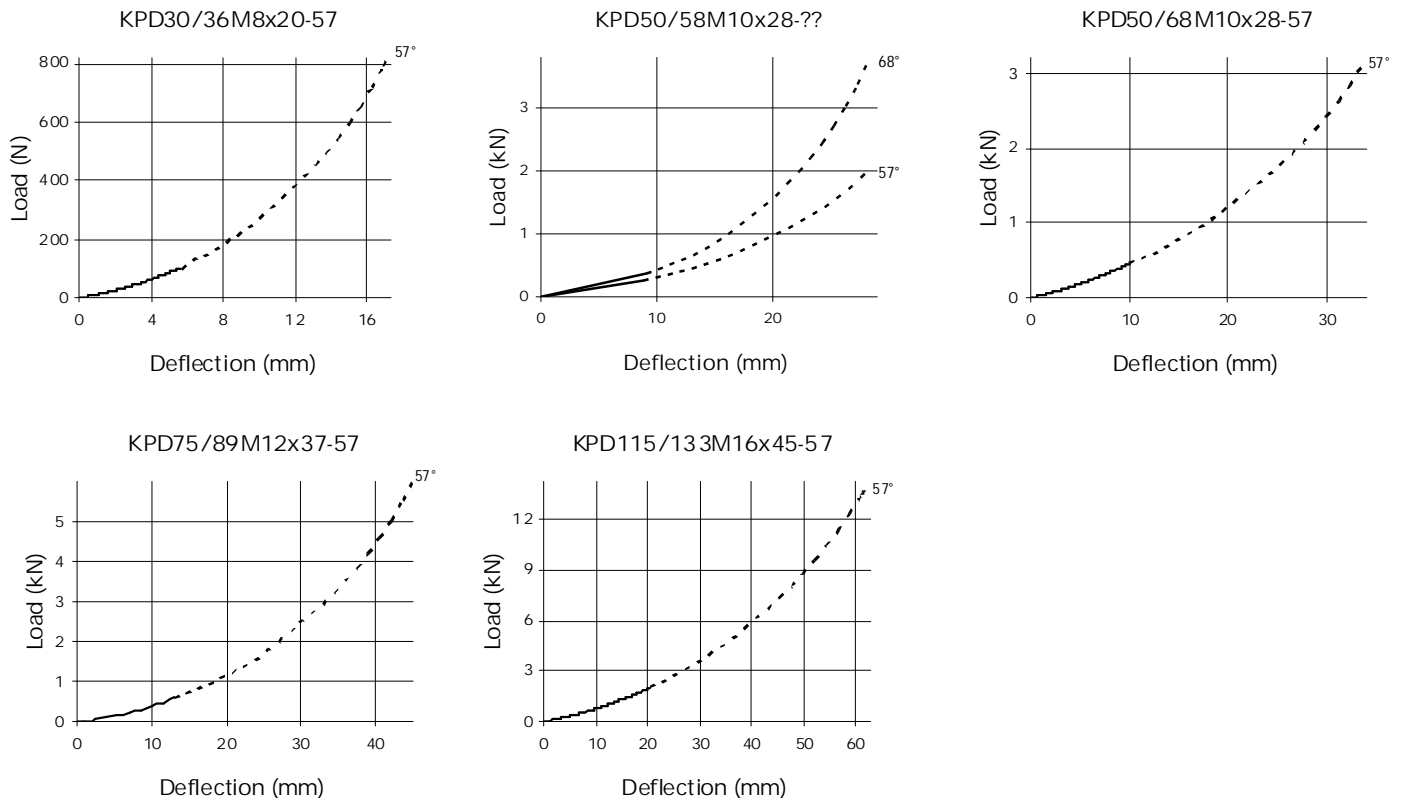
Available Sizes

• = STANDARD STOCK

Dimensions Dia/Ht (mm)	Screw Thread Size x L (mm)	Special Screw Thread Size (mm)
• 30/36 *	M8 x 20	M6 x 15, M8 x 8 M8 x 10, M8 x 13 M8 x 16, M8 x 18 M8 x 23, M8 x 27
• 50/58 *	M10 x 28	M8 x 23, M10 x 15
• 50/61	M10 x 28	M10 x 20, M10 x 33
• 50/68 *	M8 x 36	M12 x 27
75/89	M12 x 37	M12 x 27, M12 x 32
• 115/133 *	M16 x 45	

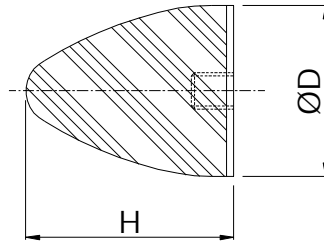
* These parts are only standard in natural rubber of hardness 57° Shore A

Compression Characteristics



Note: The Load/Deflection graphs are for maximum continuous loads up to 15% strain, the dotted line is for occasional shock loads up to 50% strain

Note: There is a possible deviation of ±20% in the above load/deflection graphs due to production and hardness tolerances

Buffer Type KP/E

Compounds Produced:
 (Natural Rubber) 43° Shore A (soft)
 57° Shore A (medium)
 68° Shore A (hard)

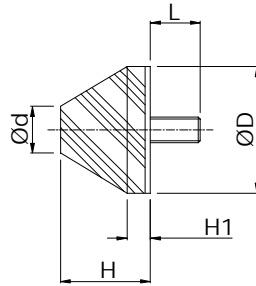
Available Sizes

• = STANDARD STOCK

Dimensions Dia/Ht (mm)	Screw Thread Size x L (mm)	Special Screw Thread Size (mm)
30/36	M8	
50/58	M10	
50/61	M10	M8, M12
50/68	M10	
75/89	M12	M16
115/133	M16	M20

* These parts are only standard in natural rubber of hardness 57° Shore A

Buffer Type KS/D



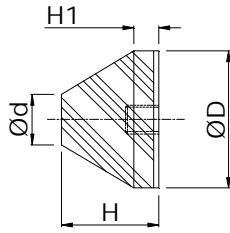
Compounds Produced:
 (Natural Rubber) 43° Shore A (soft)
 57° Shore A (medium)
 68° Shore A (hard)

Available Sizes

• = STANDARD STOCK

Dimensions Dia/Ht (mm)	Screw Thread Size x L (mm)	Special Screw Thread Size (mm)
15/20 (H1 - 10mm, Ød - 7.5mm)	M4 x 13	M4 x 6, M4 x 8 M4 x 10, M4 x 15
25/15 (H1 - 3mm, Ød - 7.5mm)	M6 x 18	M6 x 8, M6 x 10 M6 x 12, M6 x 15 M6 x 20
25/28 (H1 - 5mm, Ød - 5.5mm)	M6 x 18	M6 x 8, M6 x 10 M6 x 12, M6 x 15 M6 x 20

Buffer Type KS/E



Compounds Produced:
 (Natural Rubber) 43° Shore A (soft)
 57° Shore A (medium)
 68° Shore A (hard)

Available Sizes

• = STANDARD STOCK

Dimensions Dia/Ht (mm)	Screw Thread Size x L (mm)	Special Screw Thread Size (mm)
15/20 (H1 - 10mm, Ød - 7.5mm)	M4	
25/15 (H1 - 3mm, Ød - 7.5mm)	M6	
25/28 (H1 - 5mm, Ød - 5.5mm)	M6	