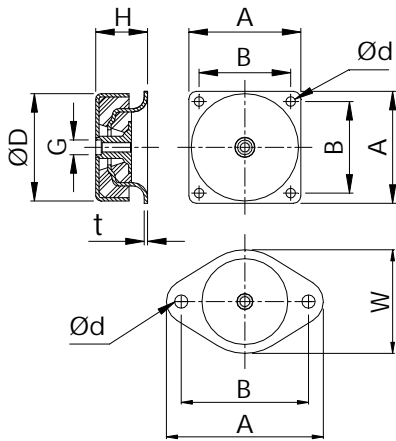


IS Mountings



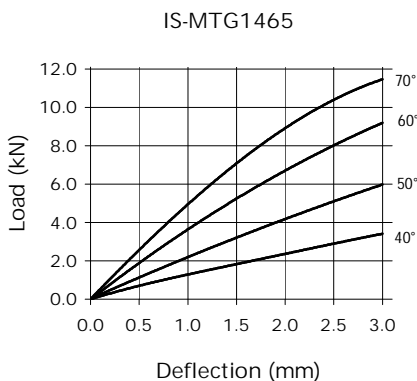
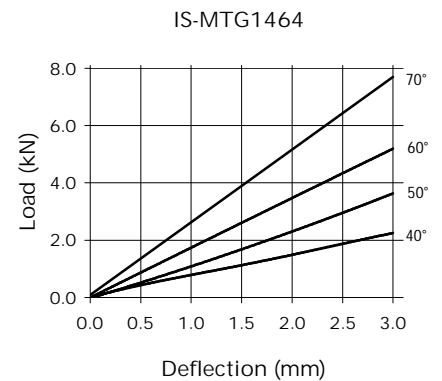
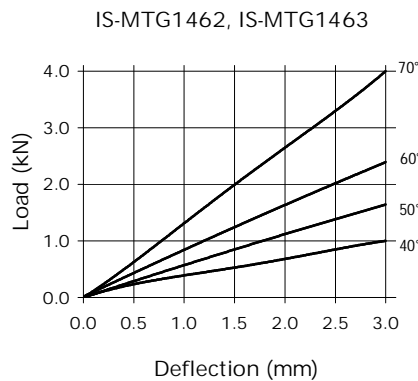
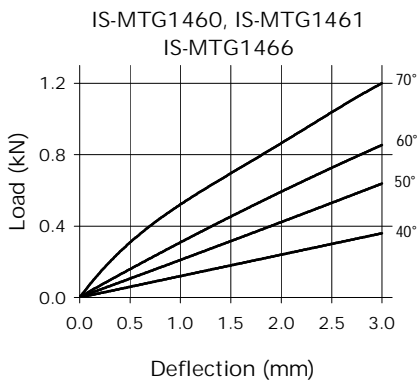
Tooling is available for a range of sizes and styles though minimum order quantities may apply. Parts are usually manufactured in chloroprene rubber. The construction of these parts is such that the stiffness in the three axes is very similar.

Dimensions



Part No.	A (mm)	B (mm)	H (mm)	ØD (mm)	G (mm)	t (mm)	Ød (mm)	W (mm)
IS-MTG1460	60.5	49.5	28.0	58.0	M6x1.0	1.8	5.2	—
IS-MTG1461	77.0	61.0	28.0	58.0	M8x1.25	1.8	9.0	—
IS-MTG1462	76.0	63.5	38.0	76.0	M10x1.5	2.5	6.4	—
IS-MTG1463	90.0	74.0	38.0	76.0	M12x1.75	2.5	9.0	—
IS-MTG1464	133.0	108.0	63.0	124.0	M16x2.0	4.0	11.9	—
IS-MTG1465	175.0	143.0	90.0	168.0	M16x2.0	5.0	13.5	—
IS-MTG1466 Note: 2 Hole Flange	86.0	106.0	28.0	58.0	M8x1.25	1.8	9.0	70.0

Compression Characteristics



Note: There is a possible deviation of $\pm 20\%$ in the above load/deflection graphs due to production and hardness tolerances