

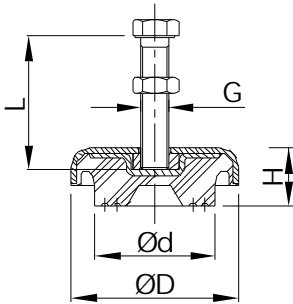
Adjustable Machine Feet



A variety of sizes is available with many held in stock. These adjustable machine feet are free-standing and enable levelling. Normally used on machines such as presses, lathes, punches, milling machines, etc. Standard parts are manufactured in chloroprene rubber.

55° Shore A (Soft)
70° Shore A (Medium)
80° Shore A (Hard)

Dimensions



Part No.	D (mm)	d (mm)	H (mm)	L (mm) (Bolt Length)	G (Fine Thread)	Maximum adjustment
AMF1012	50	36	21	60	M10 x 1.0	5mm
AMF1013	75	52	25	80	M12 x 1.5	6mm
AMF1014	100	72	35	100	M16 x 1.5	8mm
AMF1015	150	115	45	120	M20 x 1.5	10mm
AMF1016	200	160	45	120	M20 x 1.5	12mm
AMF1017	258	202	50	180	M24 x 1.5	12mm

Installation of Adjustable Machine Feet

PRIOR TO
LEVELLING

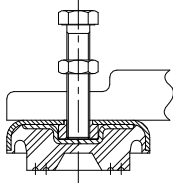


Figure 1

AFTER
LEVELLING

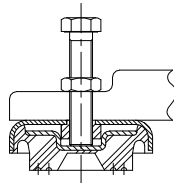
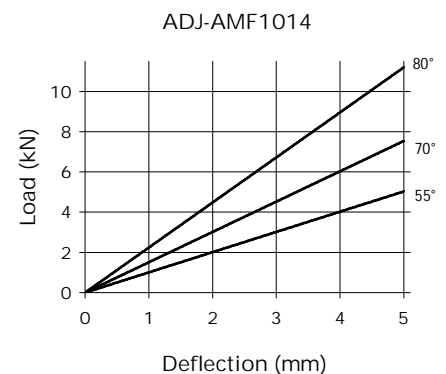
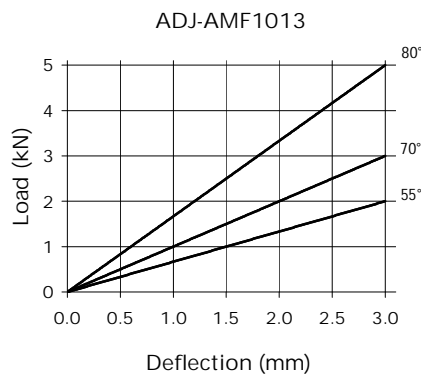
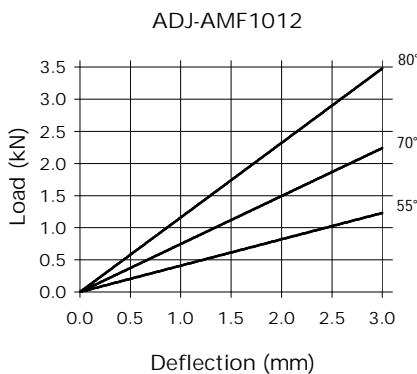


Figure 2

If inserted, the adjusting screw should be removed, and the machine positioned on top of the mountings. The adjusting screw should then be inserted until it is touching as shown in Figure 1, with the nut clear above the top of the machine base. Check the level of the machine and at the lowest point(s) screw the adjusting screw further into the mounting(s) until the machine is level. Then tighten the nuts down to the top of the machine foot for all mountings, as shown in Figure 2.

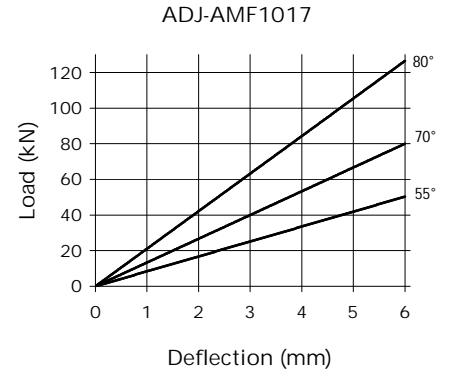
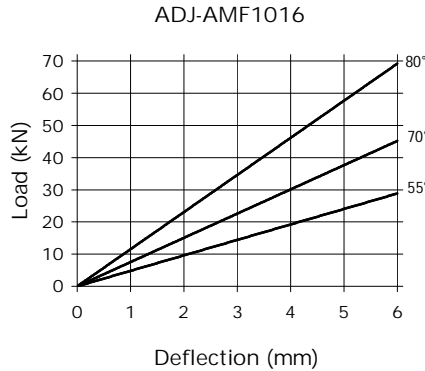
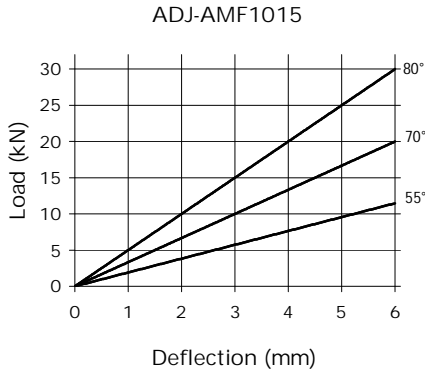
NOTE: It is important that the mountings are not used to adjust for a greater range than listed above to avoid overloading and damaging the mounting. If a greater level of adjustment is required washers/shims should be used in addition to the levelling feature.

Compression Characteristics



Note: There is a possible deviation of ±20% in the above load/deflection graphs due to production and hardness tolerances

Compression Characteristics Cont'd



Note: There is a possible deviation of $\pm 20\%$ in the above load/deflection graphs due to production and hardness tolerances

Levelling Feet



GMT also offer a range of levelling feet with combinations and sizes to suit all types of application. Spindles can be combined with various types of threaded foot plate enabling customers to specify feet to their exact requirements.

GMT feet can also be specified with noise/sound absorbing materials where required and feet are available with high load bearing capacity and/or self aligning capability.

Foot plate and spindle materials available include polyamide, plated steel and stainless steel. Levelling feet are also available which are approved to medical, food and hygiene industry standards.



For more information on our Levelling Feet range please contact GMT for our specific Levelling Feet catalogue or visit our website